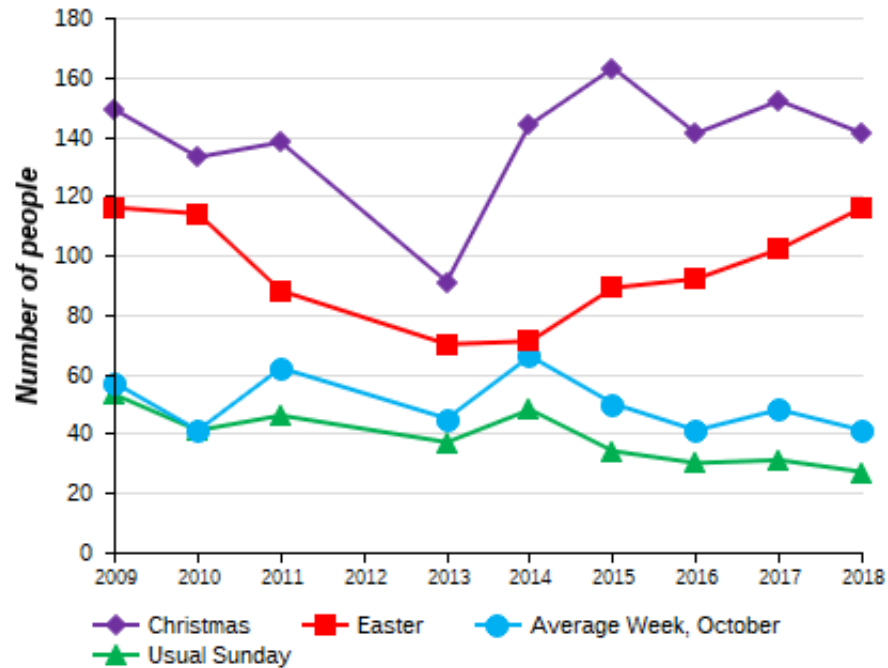


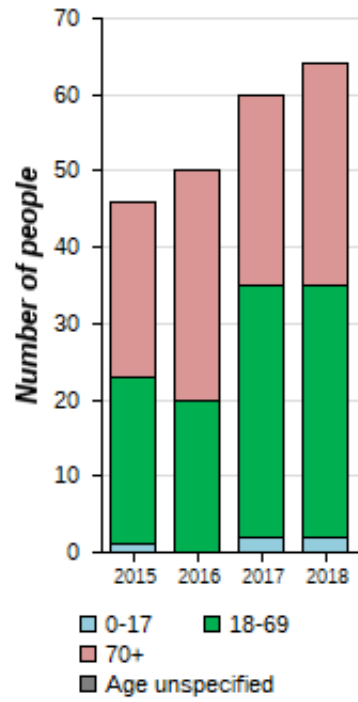
1. Attendance Summary

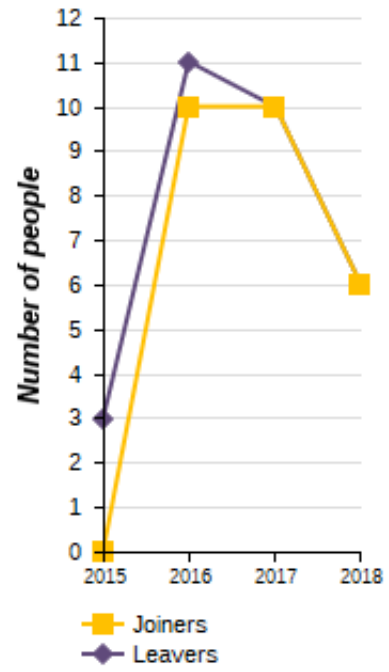
	2009	2010	2011	2012	2013	2014	2015	2016	2017	2018
Christmas	149.0	133.0	138.0	0.0	91.0	144.0	163.0	141.0	152.0	141.0
Easter	116.0	114.0	88.0	0.0	70.0	71.0	89.0	92.0	102.0	116.0
Average Week, October	56.8	40.8	62.0	0.0	45.3	66.3	49.5	40.5	47.8	40.8
Usual Sunday	53.0	41.0	46.0	0.0	37.0	48.0	34.0	30.0	31.0	27.0



2. Worshipping Community

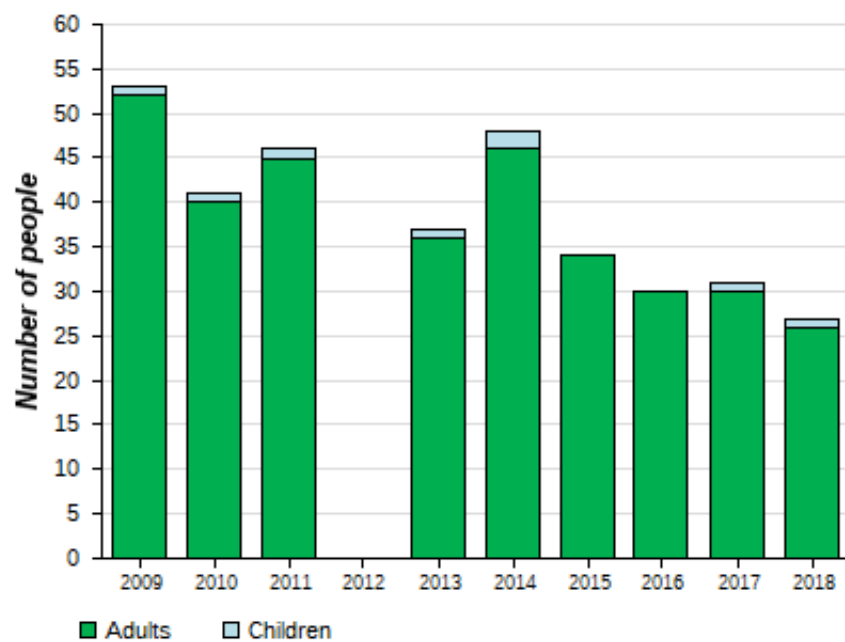
	2015	2016	2017	2018
0-17	1.0	0.0	2.0	2.0
18-69	22.0	20.0	33.0	33.0
70+	23.0	30.0	25.0	29.0
Age unspecified	0.0	0.0	0.0	0.0
Joiners	0.0	10.0	10.0	6.0
Leavers	3.0	11.0	10.0	6.0





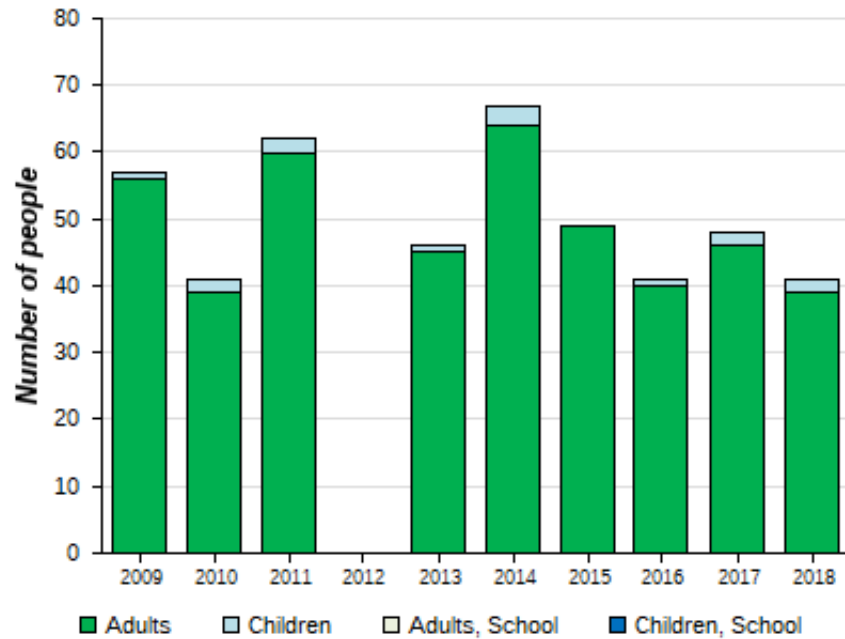
3. Usual Sunday Attendance

	2009	2010	2011	2012	2013	2014	2015	2016	2017	2018
Adults	52.0	40.0	45.0	0.0	36.0	46.0	34.0	30.0	30.0	26.0
Children	1.0	1.0	1.0	0.0	1.0	2.0	0.0	0.0	1.0	1.0



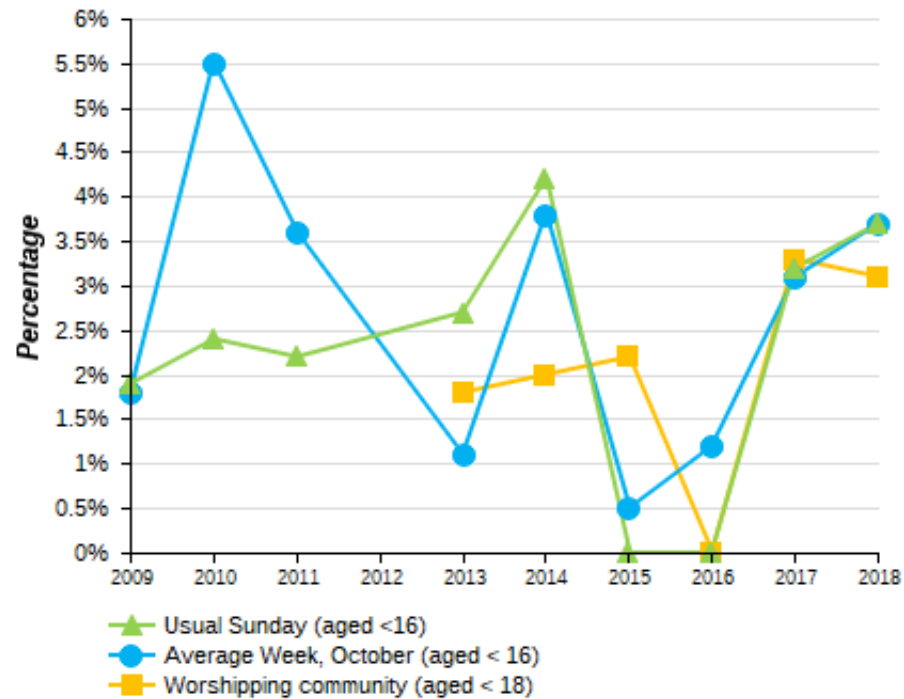
4. Average Weekly Attendance

	2009	2010	2011	2012	2013	2014	2015	2016	2017	2018
Adults	55.8	38.5	59.8	0.0	44.8	63.8	49.3	40.0	46.3	39.3
Children	1.0	2.3	2.3	0.0	0.5	2.5	0.3	0.5	1.5	1.5
Adults, School	0.0	0.0	0.0	0.0	0.0	0.0	0.0	0.0	0.0	0.0
Children, School	0.0	0.0	0.0	0.0	0.0	0.0	0.0	0.0	0.0	0.0



5. Percentage Children

	2009	2010	2011	2012	2013	2014	2015	2016	2017	2018
Usual Sunday (aged <16)	2%	2%	2%	-	3%	4%	0%	0%	3%	4%
Average Week, October (aged < 16)	2%	6%	4%	-	1%	4%	1%	1%	3%	4%
Worshipping community (aged < 18)	-	-	-	-	2%	2%	2%	0%	3%	3%



6. Baptisms, marriages and funerals

	2009	2010	2011	2012	2013	2014	2015	2016	2017	2018
Baptisms	9.0	13.4	4.0	0.0	0.0	11.0	6.0	3.0	2.0	2.0
Marriages	15.0	21.0	7.0	0.0	10.0	11.0	7.0	9.0	5.0	6.0
Funerals	12.0	11.1	7.0	0.0	14.0	2.0	10.0	12.0	6.0	8.0

